

AZIMUT 78  
FLYBRIDGE  
2022

€ 3,550,000 EX VAT

The Yacht





The Yacht



The Yacht





The Yacht



The Yacht





The Yacht





Flybridge





Flybridge



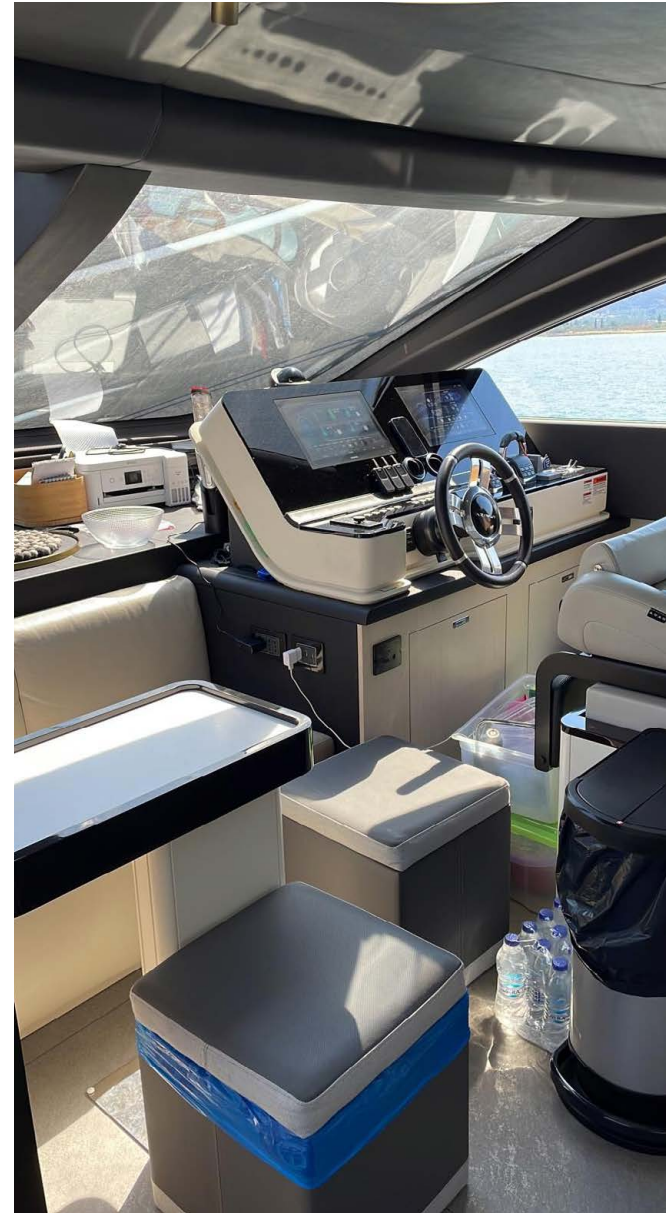


Flybridge





Helm Station



Saloon





Saloon



Saloon





Saloon



Galley





Master Cabin

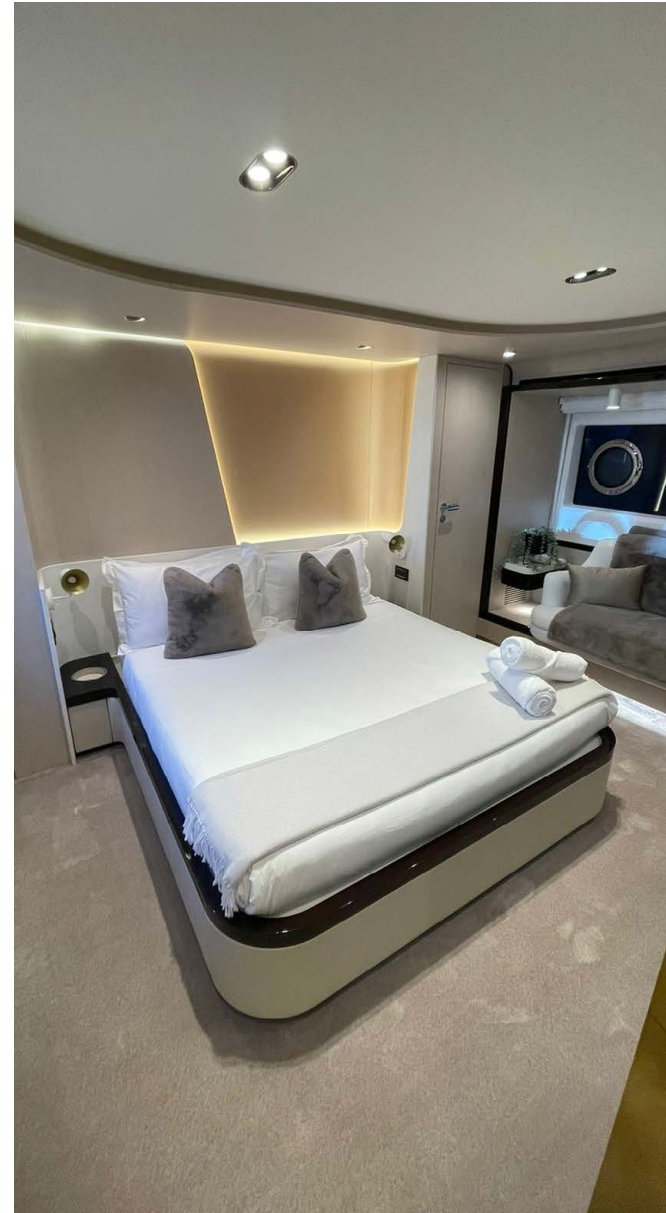


Master Cabin





Master Cabin



Master Cabin





Twin Cabin



Twin Cabin





Master Cabin



Single Beds Cabin





## Specs

### **DIMENSIONS AND WEIGHTS**

- Length over all 23.64m
- Beam: 5.75 m
- Draught: 1.77 m
- Loaded displacement: 57.97 t
- Light displacement: 45.16 t

### **Tank capacity**

- Diesel tanks capacity: 5,000 l
- Fresh water tank: 1,100 l
- Black water tank: 450 l
- Gray water tank: 450 l

### **Layout and structure**

- Cabins: 4 + 1 crew cabin
- Beds: 8 + 2 crew cabin
- Heads: 4 + 1 crew cabin
- Material: GRP + CARB

### **Performance (3 x VOLVO IPS 1350)**

- Maximum speed: 33kn
- Cruising speed: 26kn

### **OPTIONALS**

- MAIN SYSTEM
- 3 x VOLVO IPS 1350 (1000 hp) upgrade
- Bow thruster 11.4 kW
- Seakeeper Stabilizer 26
- Watermaker 180 lt/h
- Standard 220V 50Hz with 110V power converter

### **ADVANCE PACKAGE**

- Additional Kohler generator 20,5Kw
- Black Water Tank Washing System
- Extra conduits
- Grey Water Tank Washing System
- Watermaker predisposition
- Electric searchlight with additional control on second helm
- Shore water connection
- Dècor Upgrade
- Miele appliances

## Specs

### EXTERIOR

- removable carbon fiber poles for sunbathing area and sitting area
- Bow table with corian frame and synthetic marble insert
- Cockpit awning (automatic)
- Cockpit furniture with corian frame and synthetic marble insert top
- Co-pilot seat on fly
- Dimmer lights on fly
- Flybridge furniture with storage. Top with corian frame and synthetic marble insert
- Flybridge hatch
- Hard top (painted in Etna Grey)
- Lounge furniture on aft fly with two love seats in Batyline fabric
- Luxury lighting package for exteriors
- Manouvering lights on bow (nr.2)
- Nr. 2 exterior teak stools for flybridge bar
- Teak on flybridge deck
- Telescopic gangway
- Underwater lights under sponsons (2X2) and transom (3)
- Upgraded standard exterior cushions in Batyline

### INTERIOR

- Designer table lamp in salon
- Co-pilot seat in main helm
- Domotic lighting system in salon
- Forward salon sofa
- Interior scenic lights package
- Lacquered electric blue inserts on forward salon bulkhead
- Master head shower wall in marble
- Third bed in crew cabin

### APPLIANCES

- Dishwasher
- Icemaker on fly
- Refrigerator and icemaker in cockpit furniture
- Washer and dryer in crew cabin (two separate units)
- Winecooler in galley

### ELECTRONICS

- Garmin AIS 800
- Volvo Glass Gold package
- VIDEO - TV - HI-FI
- Premium Audio Video Package



## Specs

### EXTRA OPTIONS

- CO indicator
- Cockpit docking station
- Dimmer lights for interiors (master cabin, VIP, guests cabin)
- Roman blinds in master cabin
- Roman blinds in salon with black out system (automatic)
- Roman blinds in vip and guest cabin
- Barbecue on fly bar top
- Central vacuum system
- Video Cameras in engine room, cockpit and flybridge
- Gentas Cement floor for galley and main helm
- Mosquito net for portholes
- Safe in master cabin
- Vanity table in master cabin with shelf and lamp on portside
- Wooden floor in main deck WHITE MOON OAK
- Hi-lo TV mechanism in salon
- Painted domes
- Electric awning for aft flybridge
- Removable shower on aft
- Dividing wall with door in crew cabin

- Raymarine Thermocamera M232
- Upgraded standard exterior teak tables and tops in corian frame with syntetic marble insert tops

### ADDITIONAL OPTIONS

- Junction to transform 2 single beds of portside guest cabin into a double bed
- Additional waterproof socket in aft storage
- Salon Rugs Peanut shape
- DUPLEX WOODLOOK 55 in the salon – automatic (no blackout)
- Separate blackout roll behind roman blinds in master cabin
- Predisposition for loudspeakers in aft storage
- Safe in crew cabin
- Blackout attached to roman blinds in VIP and guest cabins
- Set of linen for cabins (crew cabin excluded)
- 8 set of towels
- Set of linen for double bed in guest cabin
- Anchor chain 14mm 120 mt long
- Cushions for flybridge stools
- Door lock for VIP and guests cabins

## Disclaimer

All speeds, measurements, capacities, consumptions, etc. may be approximate or estimated. Specifications provided for information only. Data was obtained from sources believed to be reliable and is not guaranteed by owner or brokers. Buyer assumes the responsibility to ascertain the correctness of all data contained herein and otherwise provided and must instruct his agent and surveyors to confirm all details for accuracy prior to purchase. Subject to prior sale, price and inventory change, or withdrawal from market without notice.





*Benetti*

**ATLANTIS**  
COLLECTION

**MAGELLANO**  
COLLECTION

**FLYBRIDGE**  
COLLECTION



*Grande*  
COLLECTION

---

For more information please contact: Niso Gado  
+972-50-7644438 | [niso@azimutyachts.co.il](mailto:niso@azimutyachts.co.il) | [www.azimutyachts.co.il](http://www.azimutyachts.co.il)

---